



CUSTOM METAL CONTRACTING LTD
49, 5342 – 72nd Avenue SE
Calgary, Alberta T2C 4X5
Phone: 403-291-9767 Fax: 403-291-9416

CMPS – Series 10 Panel System *Face Sealed / Wet Sealed*

Not Tested

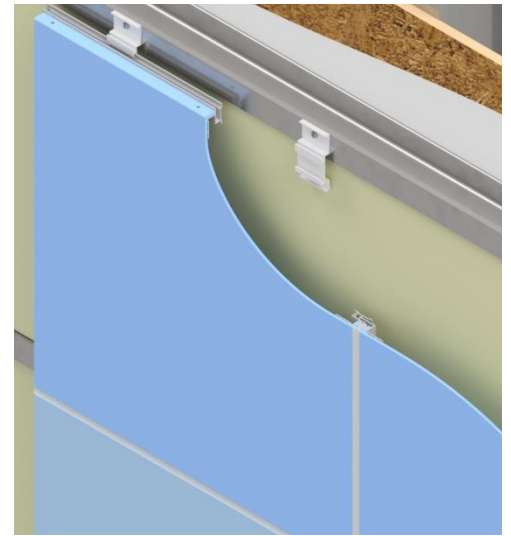
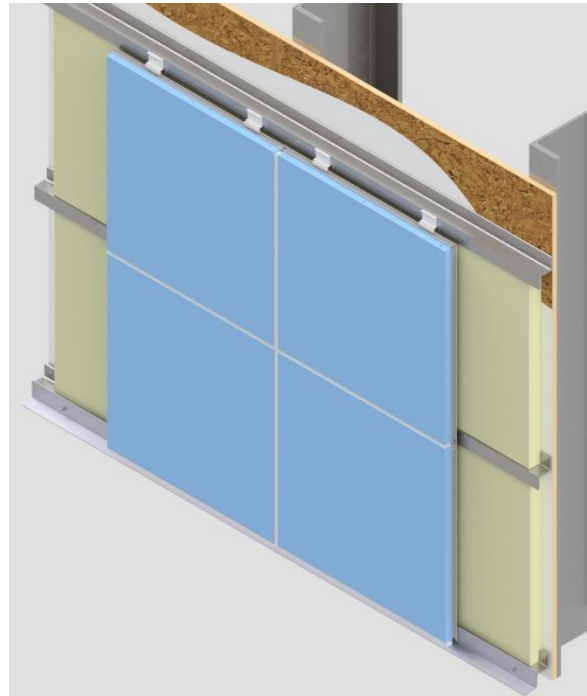
Benefits

- Male / female connections for panel to panel joints, we have eliminated the staggered clip for ease of install.
- Limited by standard sheet size of supplier offerings', all panels are made to fit your requirements not ours.

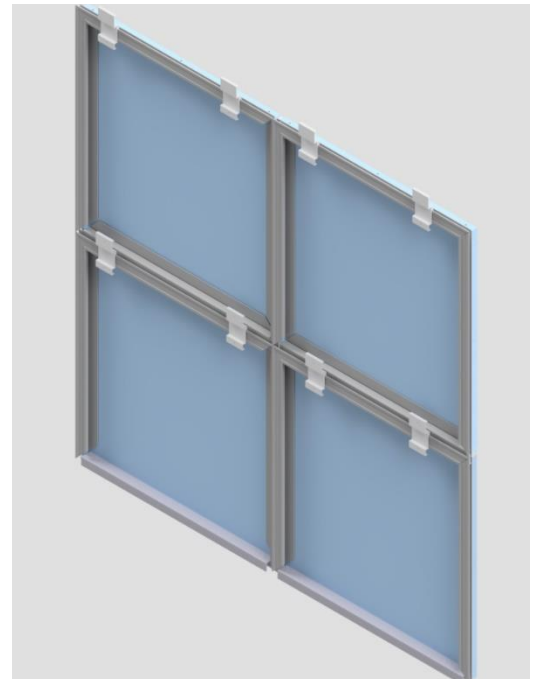
Flexibility

Options for Skins

- 3mm PE Composite
- 4mm PE Composite
- 4mm FR Composite
- 6mm PE Composite
- 6mm FR Composite



- Series 10 is a face sealed panel system.
- Utilizing a Male / Female connection for ease of install. The perimeter extrusions are mechanically fastened with dome headed rivets.
- Ready to install right out of the skid if you choose the option for a continuous clip.
- Ensure you are using a high-quality sealant for proper performance.
- Utilizing very similar extrusion configuration as our proven Series 20 including the same clip, thus having the same characteristics of capturing and controlling majority of water penetration if sealant has a leak, drained at the lowest point of the panel assembly.





CUSTOM METAL CONTRACTING LTD

49, 5342 – 72nd Avenue SE

Calgary, Alberta T2C 4X5

Phone: 403-291-9767 Fax: 403-291-9416

Panel Data

TECHNICAL INFORMATION

When sealed with a high performance sealant will meet:

Air Infiltration: **ASTM E283**

Water Penetration: **ASTM E331**

Dynamic Water Penetration Test: **AAMA 501.1**

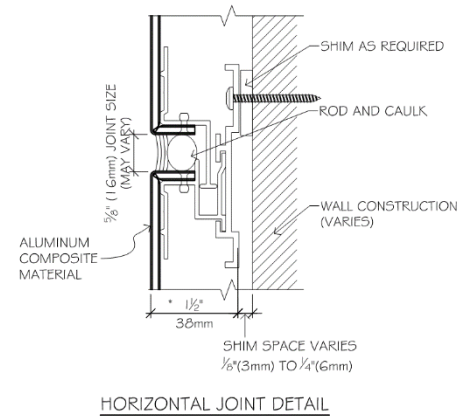
Racking Test: **AAMA 501.4**
ASTM E72

Fire Resistance (FR) Core Required: ***NFPA 285, 2018 Edition**

Vibration / Sound Dampening: **ASTM E756-83***

Panel Testing is not Available: Contact CMC for Technical Information regarding testing.

*Tests Reports on MCM materials available through network of MCM manufacturers.



PRODUCT DATA

Panel Type: Face Sealed / Wet Sealed

Material Options: 3-mm, 4mm or 6-mm composite

Finish: Factory coated Kynar 500

Optional Finish: Aluminum Plate

Clip: Field applied, panel extrusions prepped for ease of engagement. Optional continuous clip.

Substrate: Minimum 18gauge subgirts or 1/2" plywood.

Standard Panel Surface: Painted

PANEL SIZE

Max Panel Width: 60 1/2"

Min. Panel Width: 4"

Recommended Max Panel Length: 96" limited to 194 1/2"

Min. Panel Length: 4"

TECHNICAL SUPPORT

Corporate Head Office:
Custom Metal Contracting Ltd.
49, 5342 – 72 Avenue S.E.
Calgary, Alberta, Canada
T2C 4X5
Phone: 403-291-9767
Fax: 403-291-9416
info@custommetal.ab.ca

REGIONAL

REPRESENTATIVES

Southern California

MH Powell & Co. Inc.
Steve Heller
www.seismicjoints.com
Phone: 323-887-0037
Fax: 323-887-0877
sales@mhpowell.net

Washington, Idaho, Oregon
and Alaska Area

Window Tech, Inc.
Russell Harrison
Office: 425-778-2050
Cell: 503-577-9314
6520 212th St. SW, Suite 201.
Lynnwood, WA 98036
russell@windowtechinc.com

Testing

Intertek

For more information on any of
our products or services please
visit us on the Web at:

www.custommetal.ab.ca