



CUSTOM METAL CONTRACTING LTD
 49, 5342 – 72nd Avenue SE
 Calgary, Alberta T2C 4X5
 Phone: 403-291-9767 Fax: 403-291-9416

CMPS – Series 50 Panel System *Face Sealed*

Rain Screen Series

Tested AAMA 501.1

STANDARD TEST METHOD FOR
 WATER PENETRATION OF
 WINDOWS, CURTAIN WALLS,
 ARCHITECTURAL METAL WALLS
 AND DOORS USING DYNAMIC
 PRESSURE

Benefits

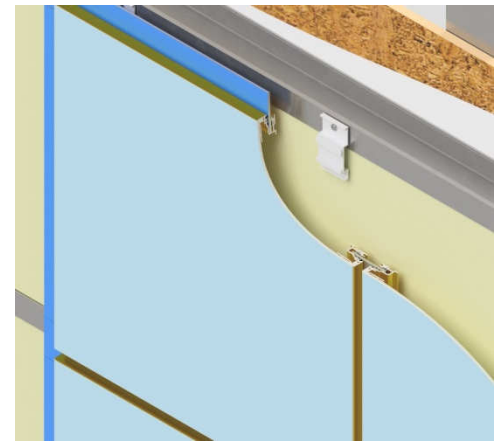
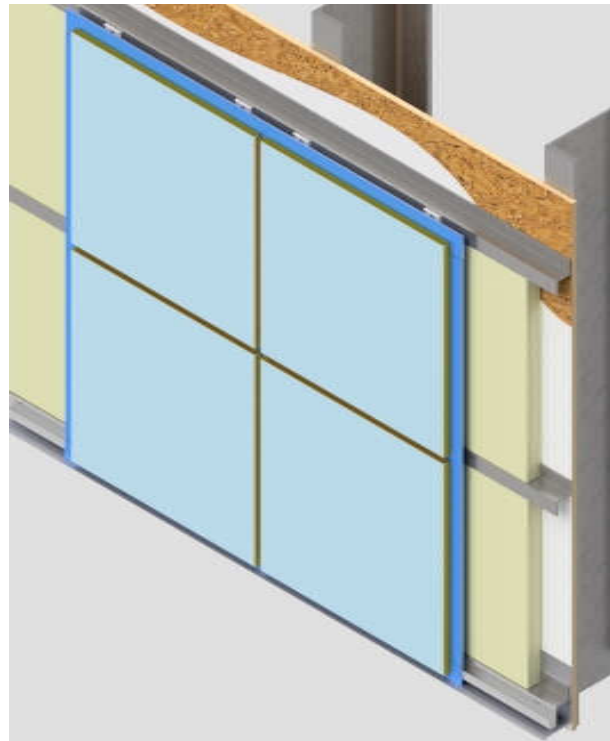
- Face sealed panels without exposed caulking.
- No yearly maintenance of the seals/caulking.
- Limited by standard sheet size of supplier offerings', all panels are made to fit your requirements not ours.

Flexibility

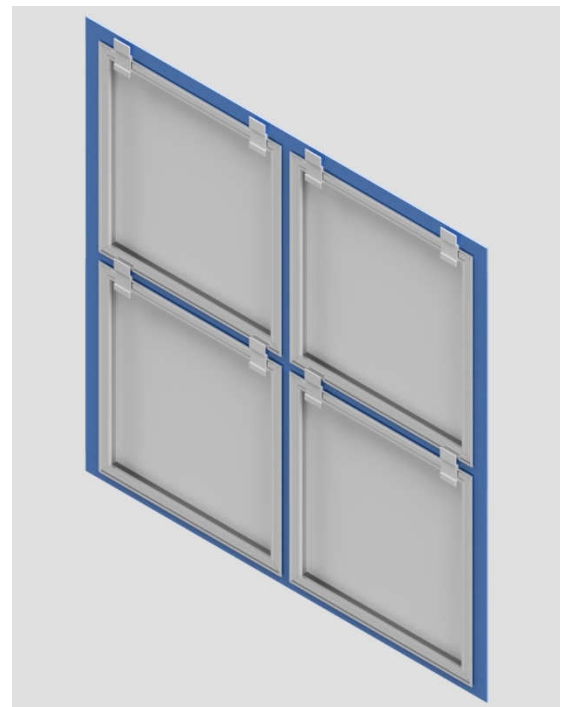
Options for Skins

- 4mm PE Composite
- 4mm FR Composite

Series 50 is an Encapsulated perimeter extrusion and it only accepts 4mm skins.



- Series 50 a high-performance face sealed panel system with double gaskets.
- Proven performance to keep the water out.
- The Series 50 panel system is the ultimate in performance and appearance for Architectural wall panel systems. The perimeter Encapsulated extrusions do not have any exposed fasteners. The perimeter extrusions can be painted with a contrasting color at no extra cost.



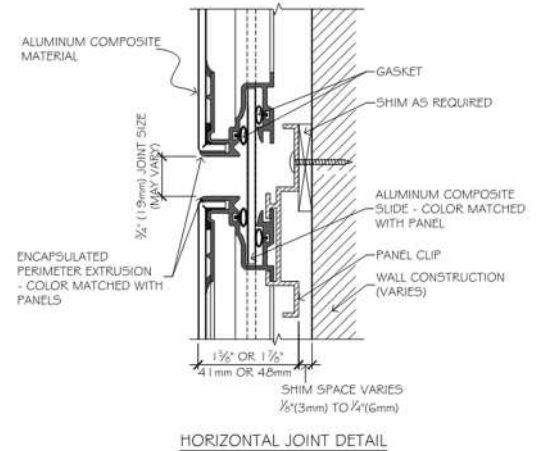


CUSTOM METAL CONTRACTING LTD
 49, 5342 – 72nd Avenue SE
 Calgary, Alberta T2C 4X5
 Phone: 403-291-9767 Fax: 403-291-9416

Panel Data

TECHNICAL INFORMATION

Air Infiltration:	ASTM E283
Structural Performance:	ASTM E330
Water Penetration:	ASTM E331
Dynamic Water Penetration Test:	AAMA 501.1
Racking Test:	AAMA 501.4 ASTM E72
Fire Resistance (FR) Core Required:	*NFPA 285, 2018 Edition
Vibration / Sound Dampening:	ASTM E756-83*
Panel Testing Available:	Contact CMC for Technical Information Sheets on testing.
*Tests Reports on MCM materials available through network of MCM manufacturers.	



PRODUCT DATA

- Panel Type:** Face Sealed
- Material Options:** 4mm composite
- Finish:** Factory coated Kynar 500
- Optional Finish:** Copper, Zinc, Stainless
- Clip:** Field applied, panel extrusions prepped for ease of engagement.
- Substrate:** Minimum 18gauge subgirts or 1/2" plywood.
- Standard Panel Surface:** Painted

PANEL SIZE

- Max Panel Width:** 61"
- Min. Panel Width:** 4"
- Recommended Max Panel Length:** 96" limited to 194 1/2"
- Min. Panel Length:** 4"

Series 50 is an Encapsulated perimeter extrusion and it only accepts 4mm skins.

TECHNICAL SUPPORT

Corporate Head Office:
 Custom Metal Contracting Ltd.
 49, 5342 – 72 Avenue S.E.
 Calgary, Alberta, Canada
 T2C 4X5
 Phone: 403-291-9767
 Fax: 403-291-9416
info@custommetal.ab.ca

REGIONAL

REPRESENTATIVES

Southern California

MH Powell & Co. Inc.
 Steve Heller
www.seismicjoints.com
 Phone: 323-887-0037
 Fax: 323-887-0877
sales@mhpowell.net

Washington, Idaho, Oregon
 and Alaska Area

Window Tech, Inc.
 Russell Harrison
 Office: 425-778-2050
 Cell: 503-577-9314
 6520 212th St. SW, Suite 201.
 Lynnwood, WA 98036
russell@windowtechinc.com

Testing

Intertek

For more information on any of
 our products or services please
 visit us on the Web at:

www.custommetal.ab.ca