



CUSTOM METAL CONTRACTING LTD
49, 5342 – 72nd Avenue SE
Calgary, Alberta T2C 4X5
Phone: 403-291-9767 Fax: 403-291-9416

CMPS – Series NR Panel System

Rainscreen/Pressure equalized

Rain Screen Series

Tested AAMA 508-07

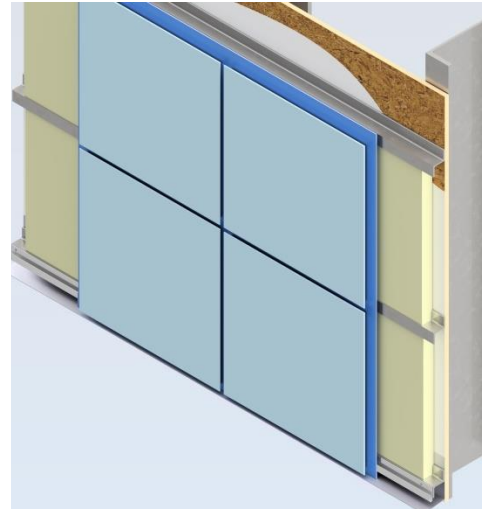
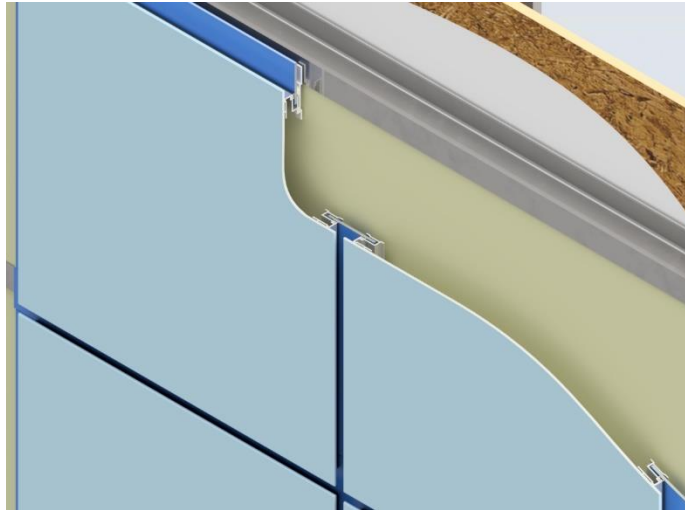
Benefits

- Ease of install.
- Limited by standard sheet size of supplier offerings', all panels are made to fit your requirements not ours.

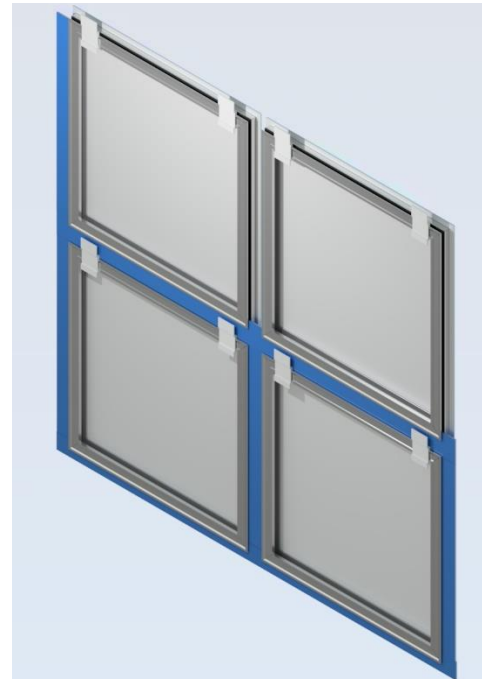
Flexibility

Options for Skins

- 3mm PE Composite
- 4mm PE Composite
- 4mm FR Composite
- 6mm PE Composite
- 6mm FR Composite
- .125" Aluminum
- .1875" Aluminum
- .25" Aluminum



- Series NR is not your typical panel system, it is unique. The floating skins gives this panel system its distinctiveness and sets it apart from the rest.
- The panel do not have returns, No Return. The extrusions are mechanically bonded to the panel skin without traditional countersunk rivets.
- The Series NR is a premium cost Architectural panel system. The perimeter extrusions set back gives the panel system the illusion that the skins are floating.





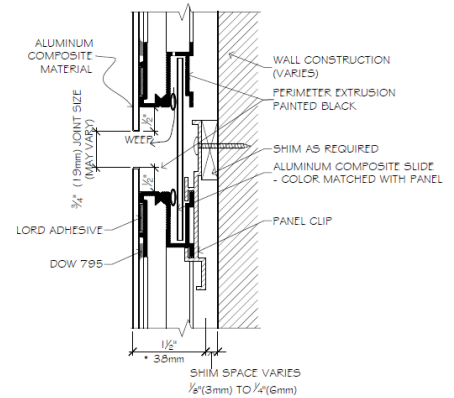
CUSTOM METAL CONTRACTING LTD
 49, 5342 – 72nd Avenue SE
 Calgary, Alberta T2C 4X5
 Phone: 403-291-9767 Fax: 403-291-9416

Panel Data

TECHNICAL INFORMATION

Air Infiltration:	ASTM E283
Structural Performance:	ASTM E330
Water Penetration:	ASTM E331
Dynamic Water Penetration Test:	AAMA 501.1
Pressure Equalized Rain Screen System:	AMMA 508-07 ASTM E1233
Racking Test:	AAMA 501.4 ASTM E72
Panel system is tested to NFPA 285	
Fire Resistance (FR) Core Required:	*NFPA 285
Vibration / Sound Dampening:	ASTM E756-83*
Panel Testing Available: Contact CMC for Technical Information Sheets on testing.	

*Tests Reports on MCM materials available through network of MCM manufacturers.



HORIZONTAL JOINT DETAIL

Series NR

PRODUCT DATA

Panel Type: Rain Screen / Pressure Equalized

Material Options: 3-mm, 4mm or 6-mm composite

Finish: Factory coated Kynar 500

Optional Finish: 0.125", 0.1875" & 0.25" Aluminum post painted.

Clip: Field applied, panel extrusions prepped for ease of engagement.

Substrate: Minimum 18gauge subgirts or 1/2" plywood.

Standard Panel Surface: Painted

PANEL SIZE

Max Panel Width: 61"

Min. Panel Width: 6"

Recommended Max Panel Length: 96" limited to 194 1/2"

Min. Panel Length: 6"

TECHNICAL SUPPORT

Corporate Head Office:
 Custom Metal Contracting Ltd.
 49, 5342 – 72 Avenue S.E.
 Calgary, Alberta, Canada
 T2C 4X5
 Phone: 403-291-9767
 Fax: 403-291-9416
info@custommetal.ab.ca

REGIONAL

REPRESENTATIVES

Southern California

MH Powell & Co. Inc.
 Steve Heller
www.seismicjoints.com
 Phone: 323-887-0037
 Fax: 323-887-0877
sales@mhpowell.net

Washington, Idaho, Oregon
 and Alaska Area

Window Tech, Inc.
 Russell Harrison
 Office: 425-778-2050
 Cell: 503-577-9314
 6520 212th St. SW, Suite 201.
 Lynnwood, WA 98036
russell@windowtechinc.com

Testing

Intertek

For more information on any of
 our products or services please
 visit us on the Web at:

www.custommetal.ab.ca