



CUSTOM METAL CONTRACTING LTD
49, 5342 – 72nd Avenue SE
Calgary, Alberta T2C 4X5
Phone: 403-291-9767 Fax: 403-291-9416

CMPS – QP Series Panel System

Crate to Wall

Rain Screen Series

Tested AAMA 508-07

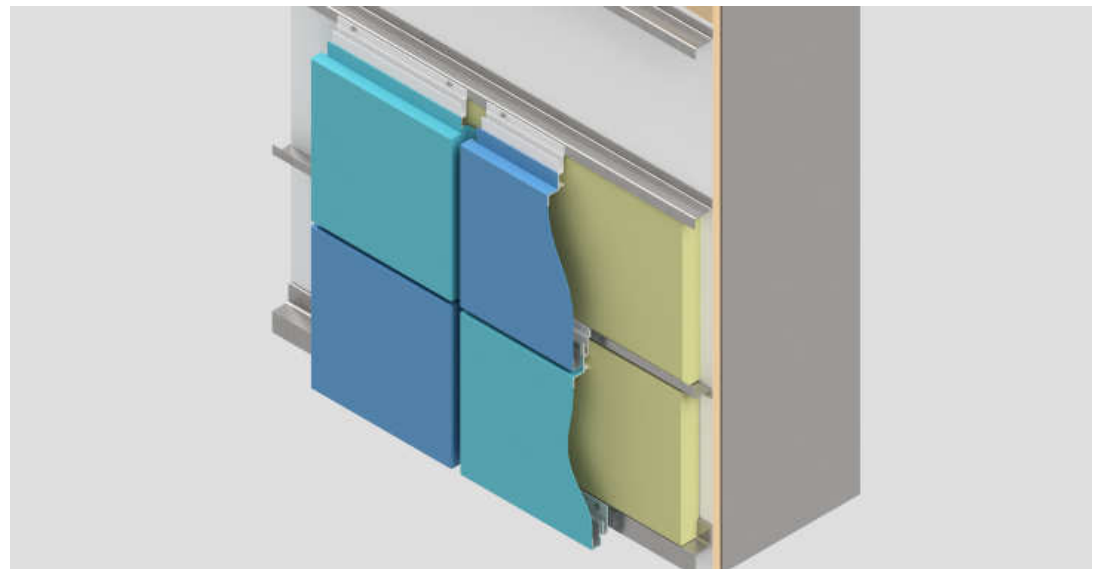
Benefits

- Ease of install, cut install timeline 20-50% when compared to a splined system.
- Not limited by standard size offerings', all panels are made to fit your requirements not ours, limited only by flat stock availability.

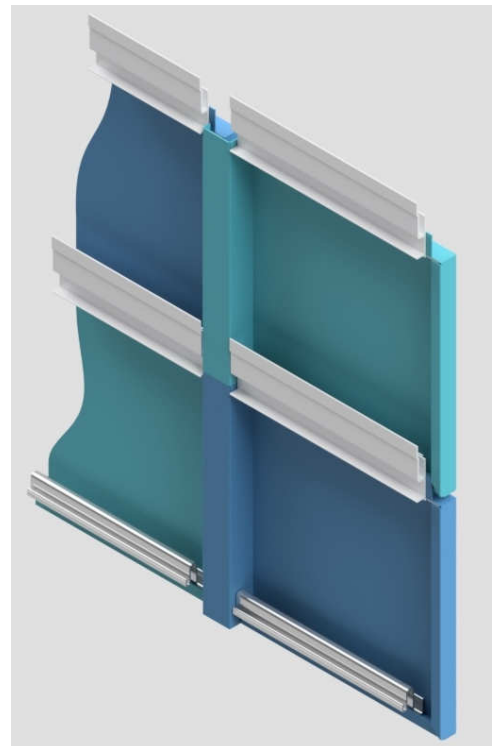
Flexibility

Options for Skins

- .0625" prepainted
- .080" prepainted
- .100" post painted
- .125" post painted
- 3mm PE Composite
- 4mm FR Composite



- Development started for this new panel system to satisfy our customers' requirements of a fast panel installation. Crate to wall install with integrated vertical and horizontal reveals and drainage trays.
- We took it one step further to incorporate the flexibility of offering a multitude of panel skins to suit project specific product requirements.
- Solid Aluminum Skins in various thicknesses meets the requirement for non-combustible wall assemblies.





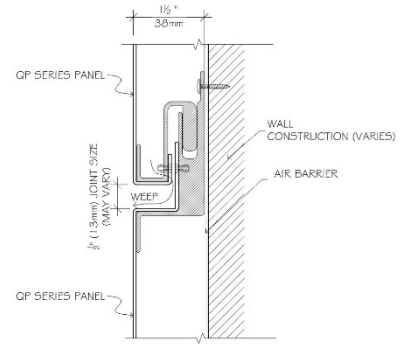
CUSTOM METAL CONTRACTING LTD
 49, 5342 – 72nd Avenue SE
 Calgary, Alberta T2C 4X5
 Phone: 403-291-9767 Fax: 403-291-9416

Panel Data

TECHNICAL INFORMATION

Air Infiltration:	ASTM E283-91
Structural Performance:	ASTM E330-93
Water Penetration:	ASTM E331-93
Dynamic Water Penetration Test:	AAMA 501.1-83
Pressure Equalized Rain Screen System:	AMMA 508 ASTM E1233
Racking Test:	AAMA 501.4 ASTM E72
Bond Integrity:	ASTM D1781-76*
Fire Resistance:	ASTM E84 Class 'A'
Fire Resistance (FR) Core Required:	*NFPA 285, 2018 Edition
Vibration / Sound Dampening:	ASTM E756-83*
Panel Testing Available:	Contact CMC for Technical Information Sheets on testing.

*Tests Reports on MCM materials available through network of MCM manufacturers.



HORIZONTAL JOINT DETAIL

PRODUCT DATA

Panel Type: Rain Screen

Material Options: Plate aluminum and 3-mm or 4-mm composite

Finish: Coil coated Kynar 500

Optional Finish: .100" & .125" are post painted Kynar

Clip: Integrated

Substrate: Minimum 18gauge subgirts or 1/2" plywood.

Standard Panel Surface: Painted

PANEL SIZE

Max Panel Width: 56"

Min. Panel Width: 3"

Recommended Max Panel Length: 94"

Min. Panel Length: 3"

TECHNICAL SUPPORT

Corporate Head Office:
 Custom Metal Contracting Ltd.
 49, 5342 – 72 Avenue S.E.
 Calgary, Alberta, Canada
 T2C 4X5
 Phone: 403-291-9767
 Fax: 403-291-9416
info@custommetal.ab.ca

REGIONAL

REPRESENTATIVES

Southern California

MH Powell & Co. Inc.
 Steve Heller
www.seismicjoints.com
 Phone: 323-887-0037
 Fax: 323-887-0877
sales@mhpowell.net

Washington, Idaho, Oregon
 and Alaska Area

Window Tech, Inc.
 Russell Harrison
 Office: 425-778-2050
 Cell: 503-577-9314
 6520 212th St. SW, Suite 201.
 Lynnwood, WA 98036
russell@windowtechinc.com

Testing

Intertek

For more information on any of
 our products or services please
 visit us on the Web at:

www.custommetal.ab.ca